

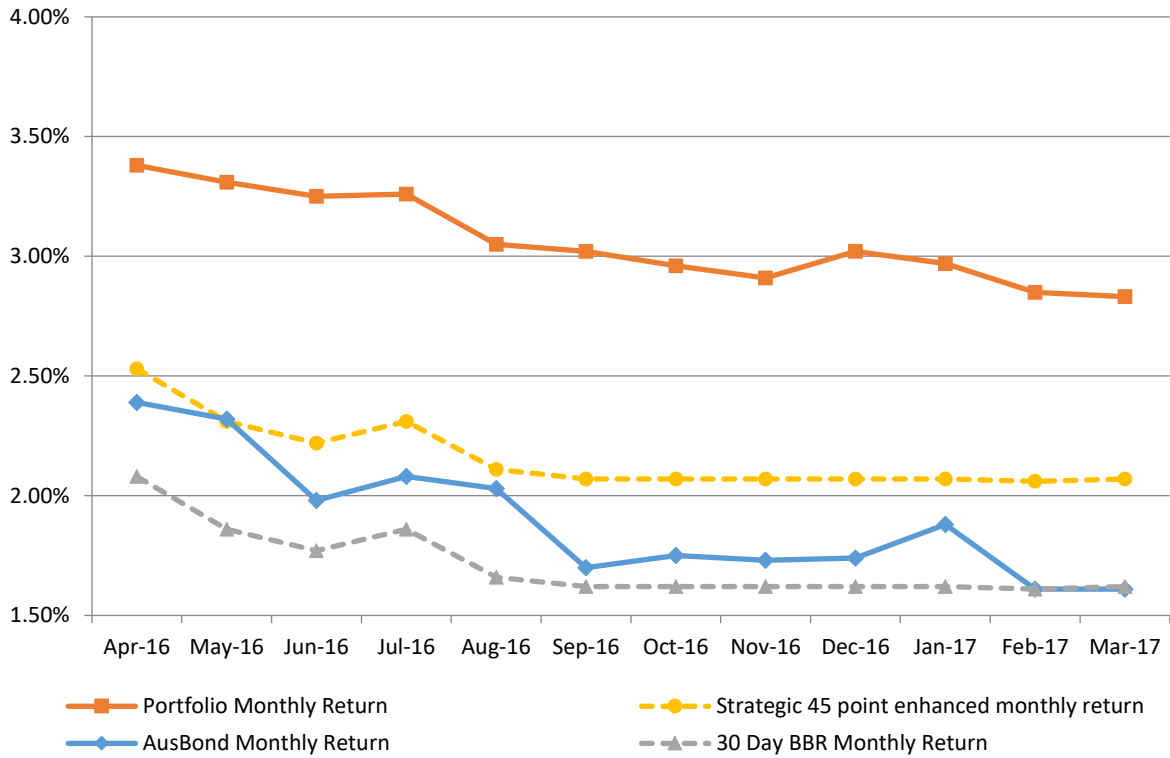
ATTACHMENT B

ATTACHMENT B

**INVESTMENT PERFORMANCE
AS AT 31 MARCH 2017**

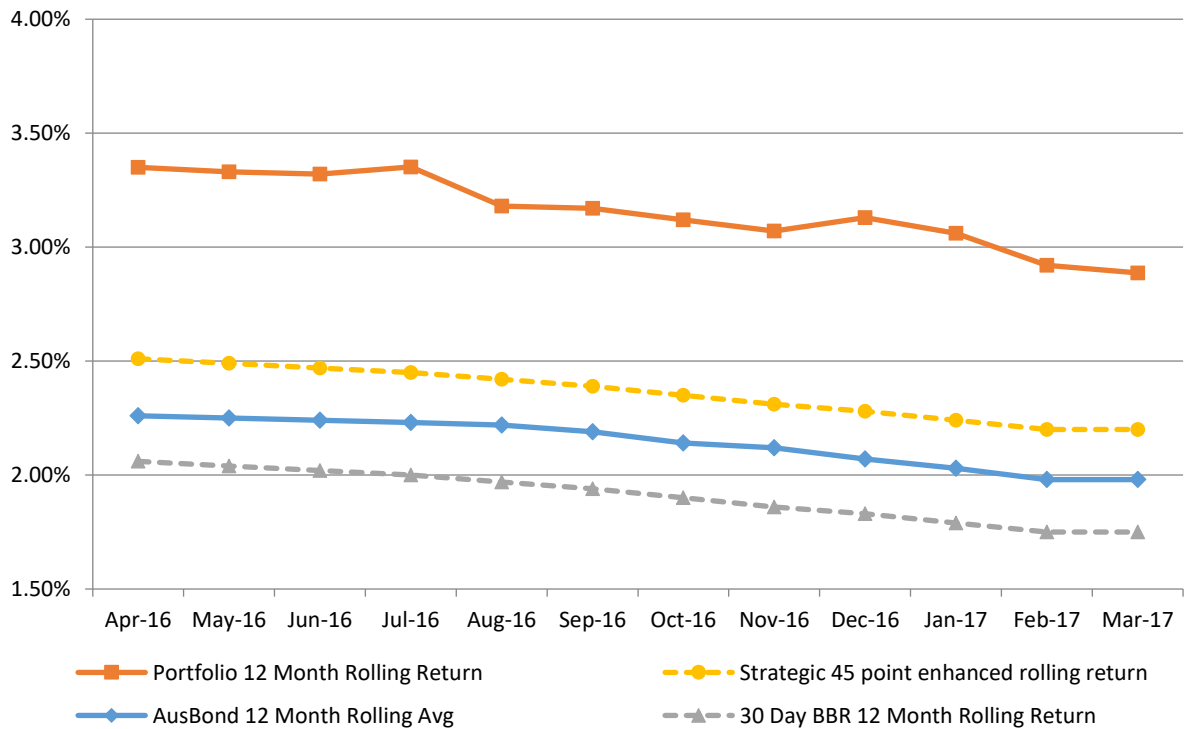
Monthly Results

**Actual Portfolio vs Strategic Enhanced Benchmark vs AusBond Benchmark vs 30 Day BBR Benchmark
March 2017**

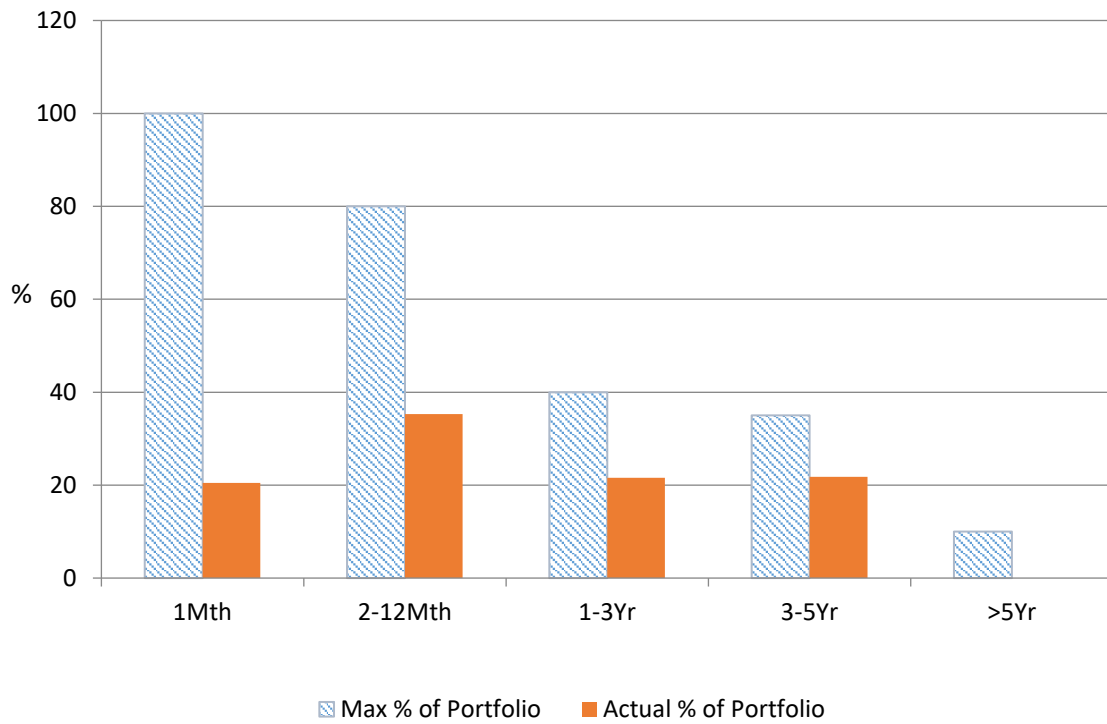


12 Month Rolling Averages

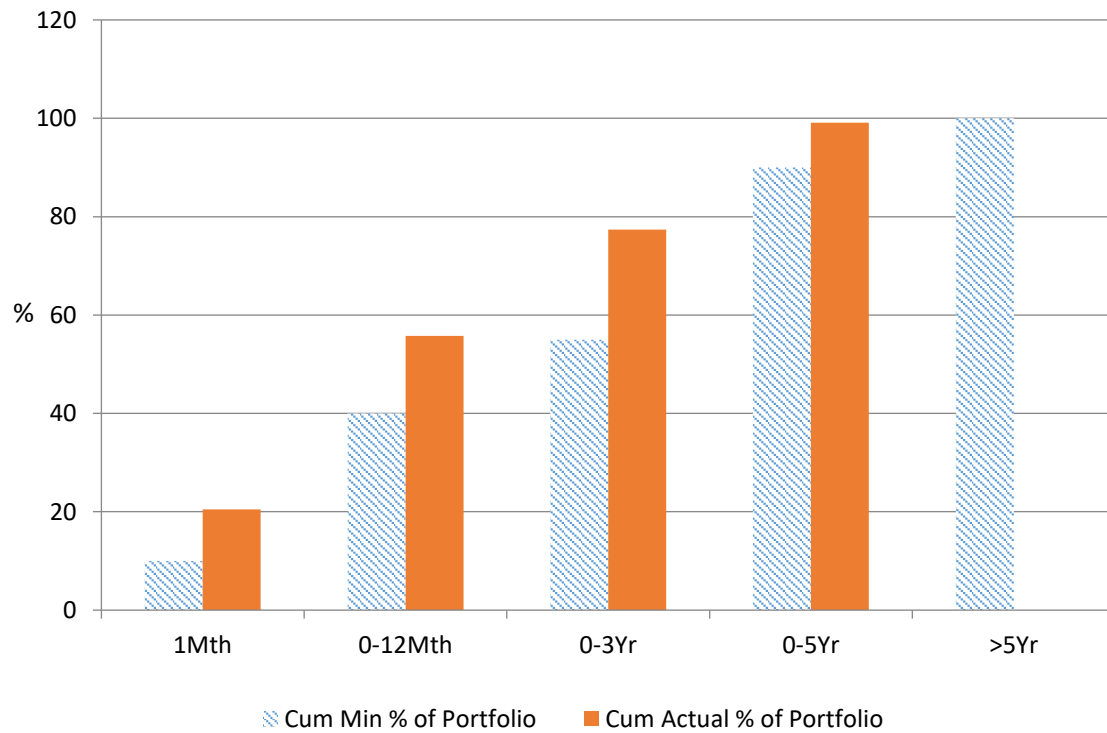
**Actual Portfolio vs Strategic Enhanced Benchmark vs AusBond Benchmark vs 30 Day BBR Benchmark
March 2017**



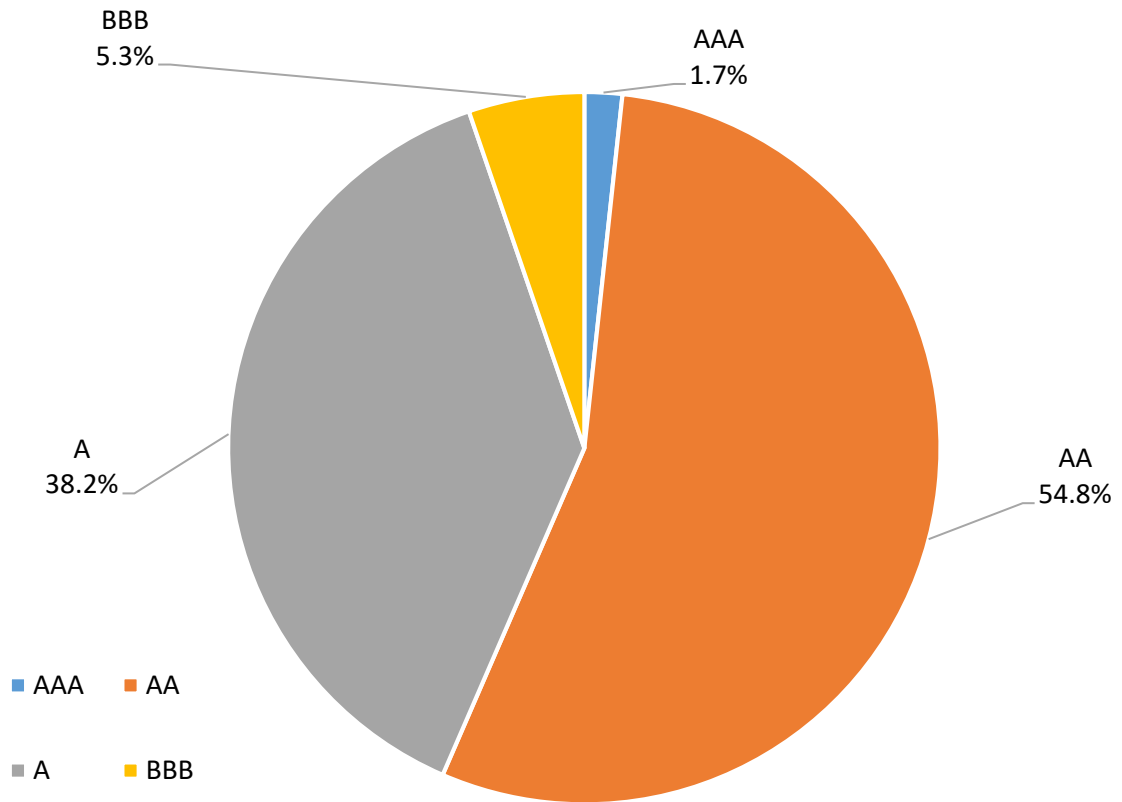
% Liquidity - Maximum Allowances



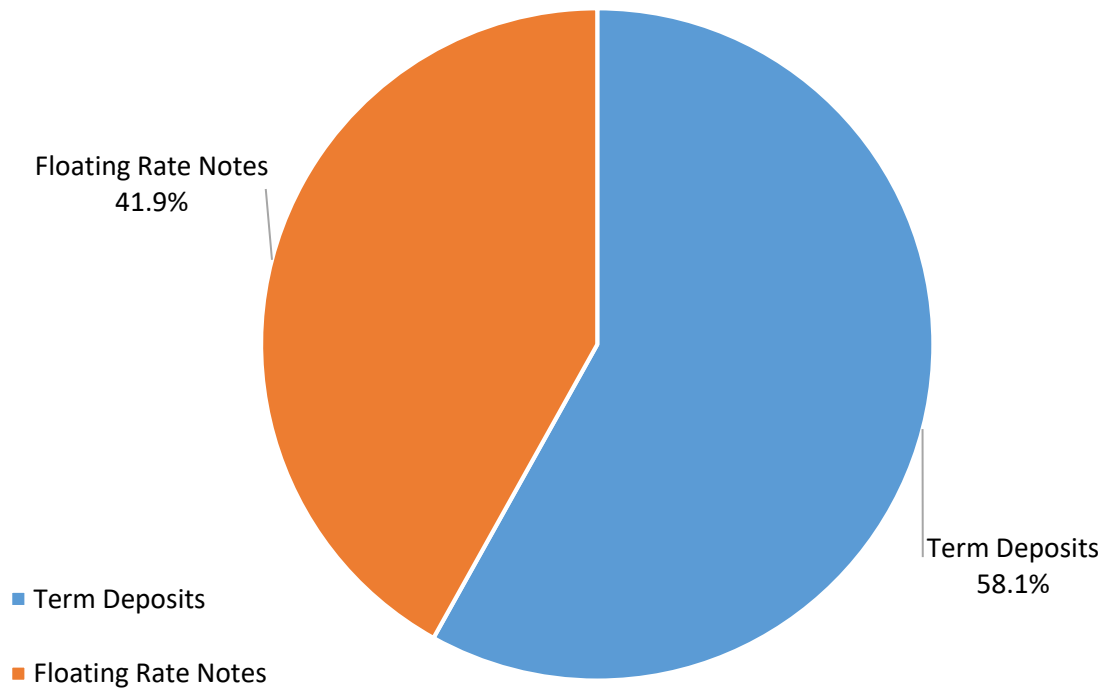
% Liquidity - Minimum Allocations



Risk Profile as at 31 March 2017



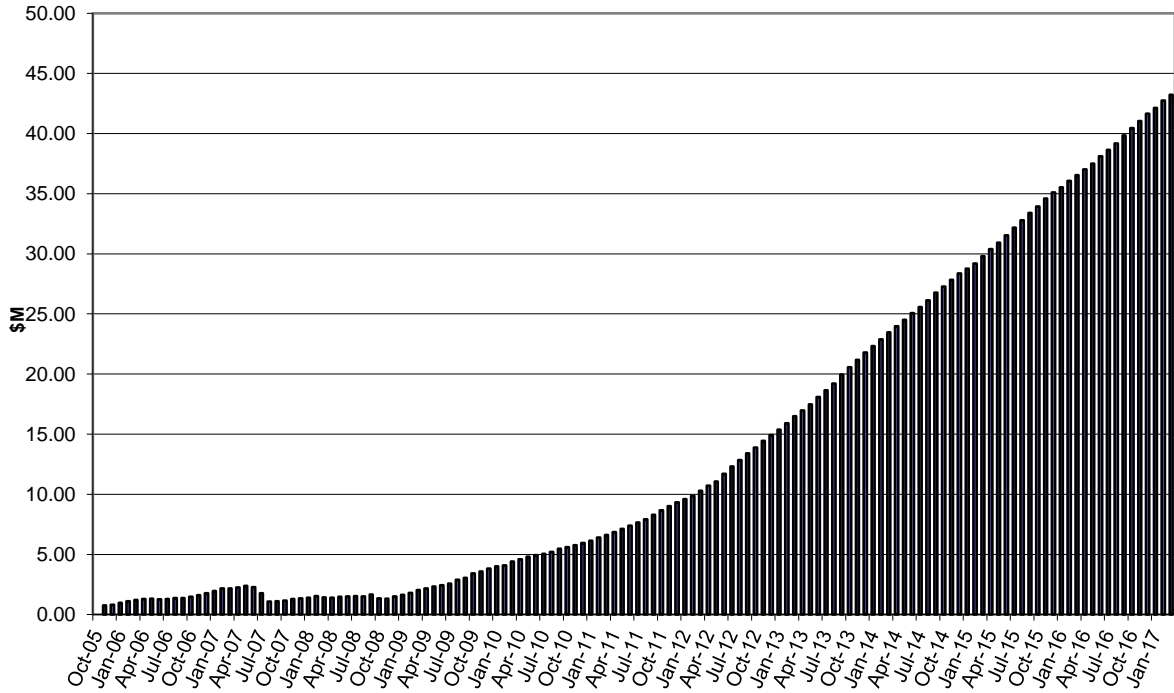
Investment Product Profile as at 31 March 2017



INVESTMENT AND CASH DISTRIBUTION BY FINANCIAL INSTITUTION
AS AT 31 MARCH 2017

Institution Category	Financial Institution	Amount \$M	Financial Inst. %	Institution Cat. %
Australian Big 4 Bank (and related institutions)	ANZ Bank	40.0	7.1	
	Commonwealth Bank-related:	103.6	18.3	
	<i>Bankwest</i>	<i>40.0</i>	<i>7.1</i>	
	<i>Commonwealth Bank</i>	<i>63.6</i>	<i>11.2</i>	
	National Aust Bank	65.0	11.5	
	Westpac Banking Corporation-related:	118.6	21.0	
	<i>St George Bank</i>	<i>0.0</i>	<i>0.0</i>	
	<i>Westpac Banking Corporation</i>	<i>118.6</i>	<i>21.0</i>	
Big 4 Total		327.2		57.8
Other Australian ADIs and Australian subsidiaries of foreign institutions	AMP Bank Ltd	5.0	0.9	
	Bank of China-Sydney Branch	5.0	0.9	
	Bank of Communication	5.0	0.9	
	Bank Of Queensland	42.0	7.4	
	Bendigo and Adelaide Bank	26.0	4.6	
	CUA Limited	25.0	4.4	
	Greater Building Society	5.0	0.9	
	Heritage Bank	2.0	0.4	
	IMB	10.0	1.8	
	Members Equity Bank	47.0	8.3	
	Newcastle Permanent Building Society	17.0	3.0	
	Royal Bank of Canada - Sydney	9.5	1.7	
	Suncorp Bank	40.0	7.1	
Other ADI Total		238.5		42.2
Grand Total		565.7	100.0	100.0

Cumulative Outperformance over AusBond Benchmark - 2005-2017



Cumulative Outperformance over 30 Day BBR Benchmark - 2005-2017

